

3.5 State Pollution Discharge Elimination System (SPDES)

NYSDEC requires that every point source discharger obtain a SPDES permit in order to legally discharge sanitary, industrial, or commercial wastewater. The permit is a comprehensive legal document, and all of its provisions and conditions are enforceable under the law. Under SPDES, NYSDEC reviews permit applications to develop the limits for types and quantities of pollutants in the effluent. The permit also includes the schedules and conditions under which discharges are allowed. Owners or operators of facilities must treat wastewater in order to meet the limits listed in their SPDES permit. In the case of municipal facilities, permits also require industries discharging into the municipal collection system to pre-treat their wastes. Compliance and self-monitoring reports are a major part of this program. Permits are reviewed and reissued every five years (NYSDEC).

Table 3.6.1
Bulk Storage

Map Id	Owner	City State	Type
414	BROWN CYNTHIA A	WILLARD NY	Gasoline, Fuel, Liquid Petroleum Storage
415	GENERAL FUEL & SUPPLY CO	TRUMANSBURG NY	Gasoline, Fuel, Liquid Petroleum Storage
416	EHRHART, G W INC	TRUMANSBURG NY	Bottle Gas, Natural Gas Facility
417	LAMOREAUX-QUINN SERVICE	TRUMANSBURG NY	Gasoline, Fuel, Liquid Petroleum Storage
418	MESSENGER, RICHARD L	ITHACA NY	Gasoline, Fuel, Liquid Petroleum Storage
419	TOWN OF LANSING WATER DISTRICT	VESTAL, NY	Gasoline, Fuel, Liquid Petroleum Storage
420	WAINWRIGHT, EARL V JR	DRYDEN, NY	Gasoline, Fuel, Liquid Petroleum Storage
421	WAINWRIGHT, EARL V JR	DRYDEN, NY	Gasoline, Fuel, Liquid Petroleum Storage
422	APALACHIN OIL CO, INC	APALACHIN, NY	Gasoline, Fuel, Liquid Petroleum Storage
423	ANDREE, ROBERT P	ITHACA NY	Gasoline, Fuel, Liquid Petroleum Storage
424	ANDREE, ROBERT P	ITHACA NY	Gasoline, Fuel, Liquid Petroleum Storage
425	AGWAY PETROLEUM CORP	SYRACUSE NY	Gasoline, Fuel, Liquid Petroleum Storage
426	DONEY, FLOYD J	FAYETTEVILLE NY	Gasoline, Fuel, Liquid Petroleum Storage
427	OVERBAUGH, THOMAS G	TRUMANSBURG NY	Bottle Gas, Natural Gas Facility

Source: NYSORPS

Section 4.2 and associated Tables 4.2.5 and 4.2.6 along with Map 4.2.1 discuss and illustrate permitted discharges to Cayuga Lake and its tributaries. A portion of these are municipal sewage treatment plants, which are discussed in Section 3.11.

Table 3.6.2
Chemical Bulk Storage

Map Id	Site Name	Site City	Owner	Active Tanks	Site Type	Total Capacity (gals)
C1	SOUTHERN CAYUGA LAKE INTERMUNICIPAL WATER COMM.	ITHACA	SOUTHERN CL INTERMUNICIPAL WATER COMM.	7	EF	20288
C2	BORG WARNER AUTOMOTIVE MORSE TEC CORP	ITHACA	BORG WARNER AUTO MORSE TEC CORP	1	D	12000
C3	MILLIKEN STATION	LANSING	NGE GENERATION, INC., NYSEG	10	E	40750
C4	MORSE INDUSTRIAL CORP.	ITHACA	EMERSON POWER TRANS CORP.	1	D	2000
C5	AGWAY ENERGY PRODUCTS	ITHACA	AGWAY PETROLEUM PRODUCTS	0	BC	0
C6	VILLAGE OF TRUMANSBURG SEWAGE TREATMENT PLANT	TRUMANSBURG	VILLAGE OF TRUMANSBURG	1	E	2000
C7	ITHACA (C) WATER TREATMENT PLANT	ITHACA	ITHACA (C) WATER TREATMENT PLANT	4	F	9680
C8	WYLLIE DRY CLEANING INC.	ITHACA	WYLLIE DRY CLEANING INC.	1	I	260
C9	ITHACA COLLEGE POOLS	ITHACA	ITHACA COLLEGE	2	G	525
C10	CORNELL LAUNDRY INC	ITHACA	CORNELL LAUNDRY INC	1	I	5000
C11	CASS PARK	ITHACA	CITY OF ITHACA	2	F	775
C13	VILLAGE OF SENECA FALLS WATER TREATMENT PLANT	FAYETTE	SENECA FALLS (V) SENECA FALLS	1	F	5500
C14	NEW YORK CHIROPRACTIC COLLEGE	SENECA FALLS	NEW YORK CHIROPRACTIC COLLEGE	0	G	0

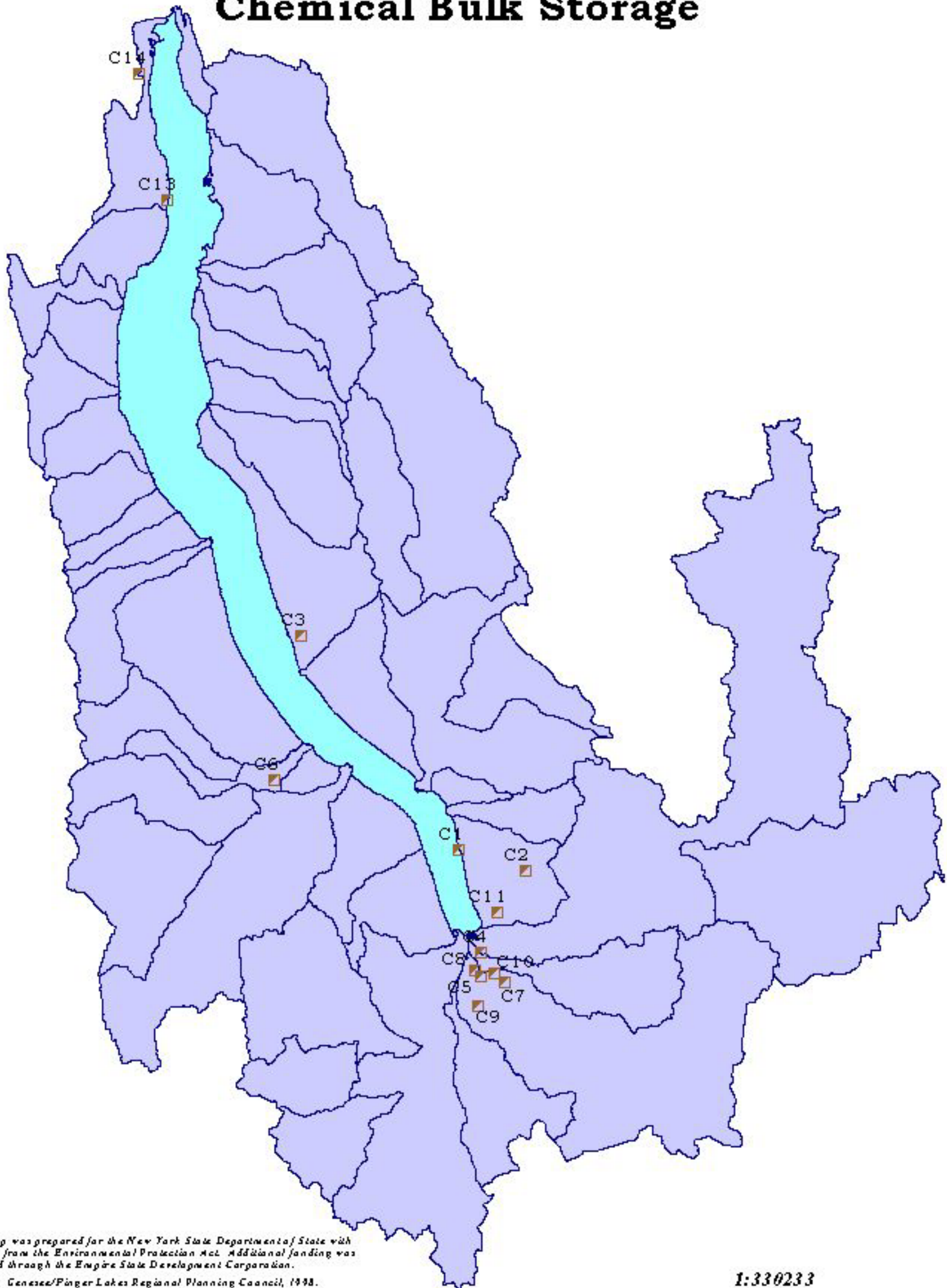
Site Type

- A Chemical Distributor
- B Storage Terminal
- C Retail Gasoline Sales
- D Manufacturing
- E Utility
- F Municipality
- G School
- H Private Residence
- I Other

Source: Adapted from NYSDEC

Information on State Pollution Discharge Elimination System (SPDES)

Cayuga Lake Watershed Chemical Bulk Storage



This map was prepared for the New York State Department of State with funding from the Environmental Protection Act. Additional funding was provided through the Empire State Development Corporation.

*Source: Genesee/Finger Lakes Regional Planning Council, 1998.
New York State Department of Environmental Conservation, Division of Environmental Remediation, Bureau of Spill Prevention and Response, October 1, 1998.*

Base Map: New York State Department of Transportation, February 1996.

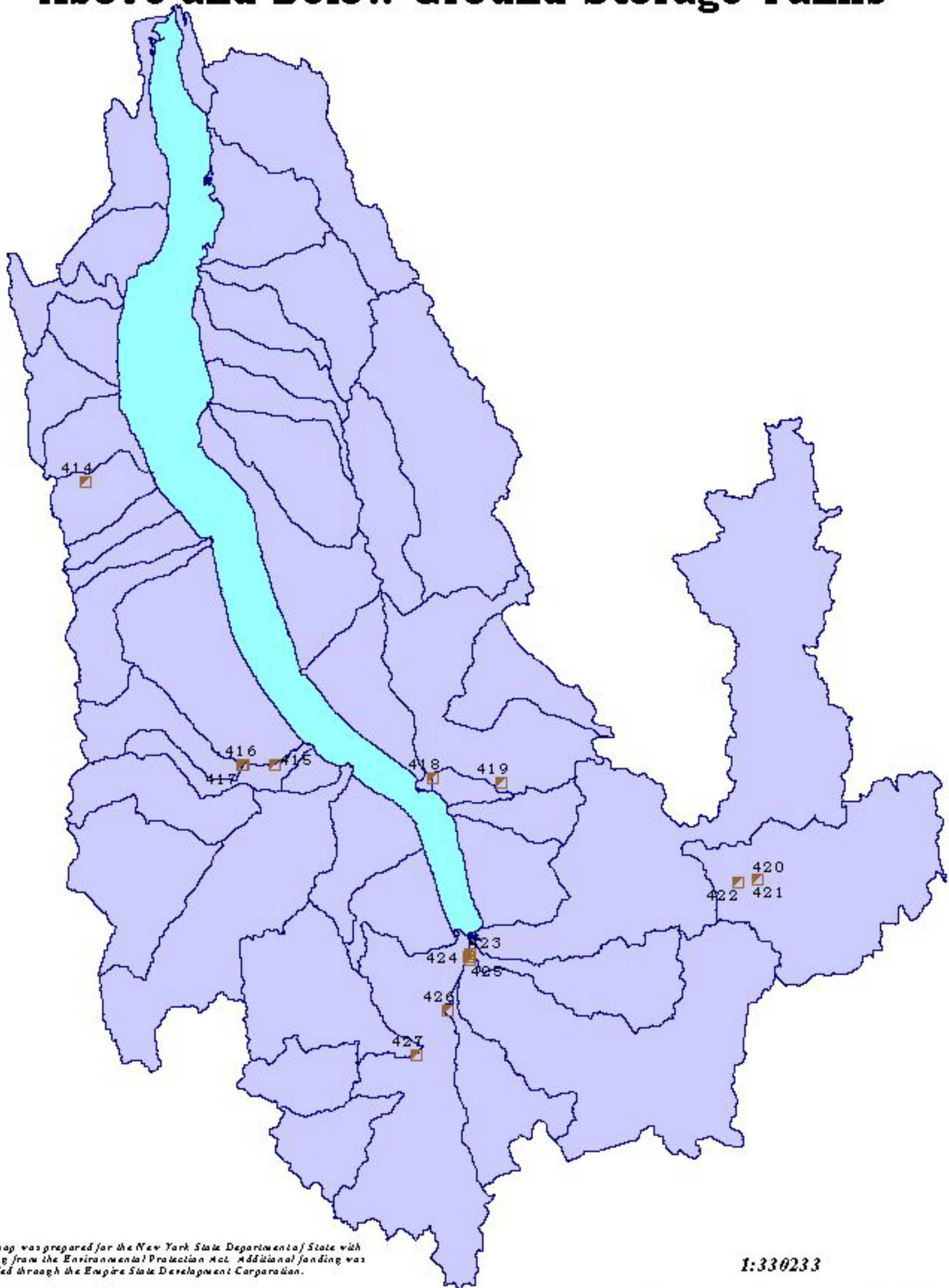
1:330233

0 4 8 Miles



Prepared by Genesee/Finger Lakes Regional Planning Council, 1998.

Cayuga Lake Watershed Above and Below Ground Storage Tanks



This map was prepared for the New York State Department of State with funding from the Environmental Protection Act. Additional funding was provided through the Empire State Development Corporation.

*Source: Genesee/Finger Lakes Regional Planning Council, 1998.
New York State Department of Real Property Services, 1998.
Tompkins County GIS Program, 1999.*

Base Map: New York State Department of Transportation, February 1996.

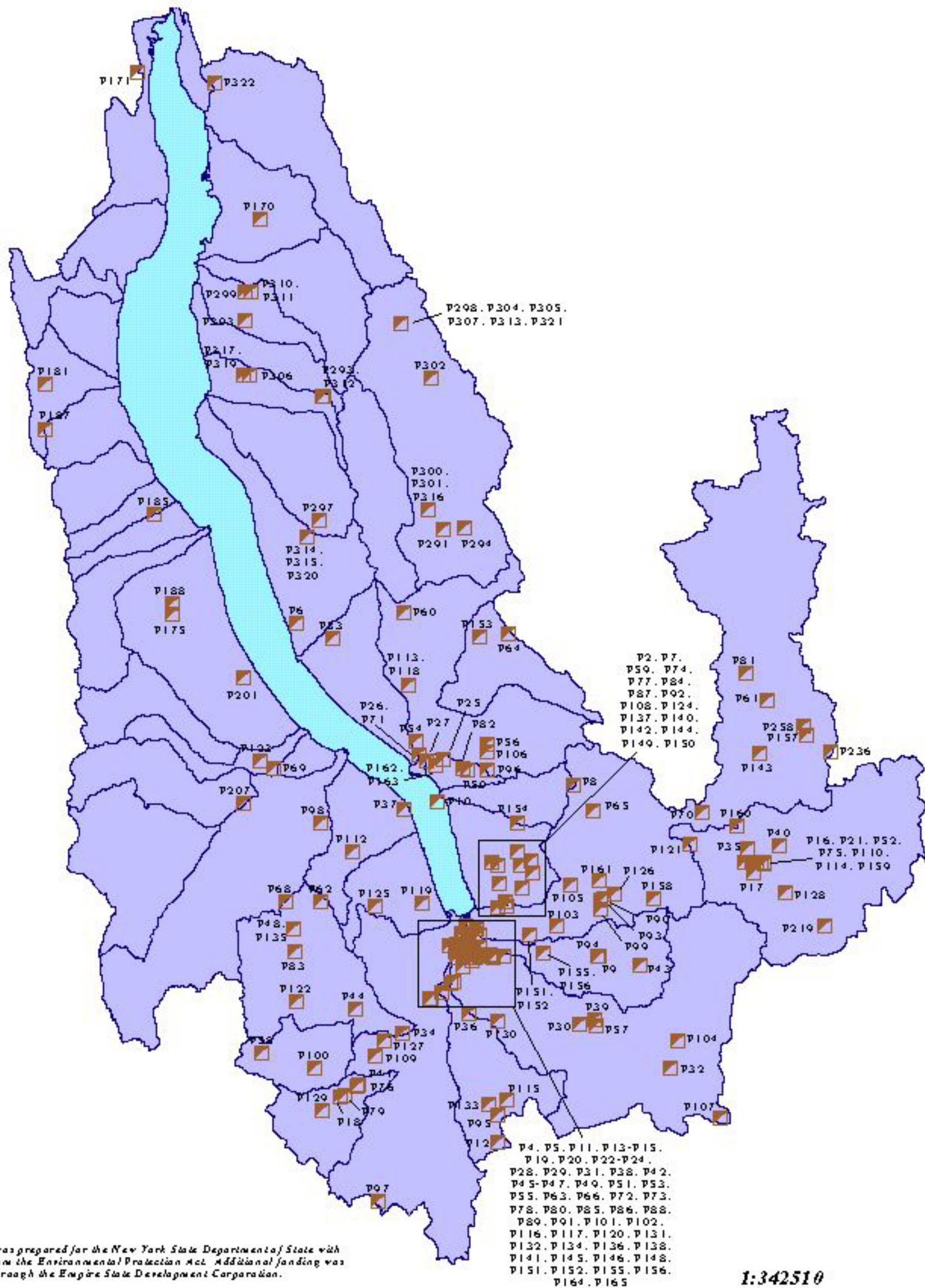
1:330233

0 4 8 Miles



Prepared by Genesee/Finger Lakes Regional Planning Council, 1999.

Cayuga Lake Watershed Petroleum Bulk Storage



This map was prepared for the New York State Department of State with funding from the Environmental Protection Act. Additional funding was provided through the Empire State Development Corporation.

Source: Genesee/Finger Lakes Regional Planning Council, 1998.
New York State Department of Environmental Conservation,
Division of Environmental Remediation, Bureau of Spill
Prevention and Response, October 1, 1998.

Base Map: New York State Department of Transportation, February 1996.

1:342510



Prepared by Genesee/Finger Lakes Regional Planning Council, 1998.

Table 3.6.3
Petroleum Bulk Storage

Map Id	Site Name	Site Municipality	Site Type	Total Tanks	Site Status	Total Capacity
P2	BORG-WARNER AUTOMOTIVE MORSETEC CORP	ITHACA	D	19	1	56285
P4	EMERSON POWER TRANSMISSION	ITHACA	D	15	4	17435
P5	AGWAY ENERGY PRODUCTS	ITHACA	AB	8	1	130285
P6	MILLIKEN GENERATING STATION	LANSING	E	11	1	99300
P7	TOMPKINS COUNTY AIRPORT	ITHACA	L	3	1	4548
P8	CARGILL, INC. (CAYUGA MINE)	LANSING	L	6	1	22825
P9	E.M. BORGER COMPRESSOR STATION	ITHACA	E	3	1	19500
P10	LOCKHEED MARTIN CORP.	SOUTH LANSING	D	2	1	2530
P11	ITHACA BOATING CENTER, INC.	ITHACA	BL	2	1	8000
P12	WILBUR LUMBER CO.	ITHACA	D	2	1	1275
P13	CITY OF ITHACA	ITHACA	E	0	2	0
P14	BABCOCK HALL (136 TERRACE HILL)	ITHACA	L	0	2	0
P15	GARAGE DE FRANCE INC.	ITHACA	C	0	2	0
P16	WAINWRIGHT OIL CO. INC.	DRYDEN	L	31	1	81985
P17	VILLAGE OF DRYDEN	DRYDEN	L	2	1	2000
P18	NEWFIELD CENTRAL SCHOOL	NEWFIELD	H	2	1	1300
P19	ITHACA JOURNAL	ITHACA		0	2	0
P20	CITY OF ITHACA	ITHACA		0	2	0
P21	TOWN OF DRYDEN HIGHWAY DEPARTMENT	DRYDEN	L	4	1	11575
P22	ITHACA U-HAUL	ITHACA	BF	0	2	0
P23	PATTERSONS SERVICE STATION OF ITHACA INC	ITHACA	B	4	1	11250
P24	NICHOL BLOCK CORP.	ITHACA	F	0	2	0
P25	LANSING ELEMENTARY SCHOOL	LANSING	H	0	2	0
P26	LANSING SCHOOL BUS GARAGE	LANSING	H	6	1	15650
P27	LANSING MIDDLE SCHOOL	LANSING	H	0	2	0
P28	KWIK-FILL #A0033-038	ITHACA	B	6	1	34000
P29	TALLMADGE TIRE SERVICE	ITHACA		0	2	0
P30	CRISPELL AUTOMOTIVE, INC.	ITHACA	B	2	1	24000
P31	EDDIE'S SUPER SERVICE	ITHACA	B	0	2	0
P32	TOWN OF CAROLINE	BROOKTONDALE	L	2	1	4000
P33	OLIVER FARM	LANSING		2	2	500
P34	LANDSTROM GRAVEL CO., INC.	NEWFIELD	DF	8	1	25125
P35	CTC OF NY INC	DRYDEN		0	2	0
P36	BIG AL'S HILLTOP QUIKSTOP, INC.	ITHACA	BC	4	1	15550
P37	WEST SHORE GAS AND GROCERY	ITHACA	B	0	2	0
P38	BEVERLY J. MARTIN ELEMENTARY SCHOOL	ITHACA	H	0	2	0
P39	VEHICLE MAINTENANCE CENTER	ITHACA	FH	8	1	35600
P40	KENNETH R. ELLINWOOD	DRYDEN	J	0	2	0
P41	NEWFIELD HIGHWAY DEPT.	NEWFIELD	F	2	1	6000
P42	SUNOCO #0363-9127	ITHACA	B	2	1	30000
P43	NORMAN L. CHRISMER	ITHACA	J	1	2	550
P44	AUSTIN PETROLEUM, INC.	FREEVILLE	BC	2	1	20000
P45	MANHEIM'S CONVENIENCE	ITHACA	B	0	2	0
P46	ITHACA SUNOCO	ITHACA	B	4	1	28550
P47	MCGUIRE & BENNETT	ITHACA		0	2	0
P48	PARTNER MARKET	ITHACA		0	2	0
P49	L B TOWNSEND DISTR INC	ITHACA		0	2	0
P50	CORTLAND PAVING COMPANY INC.	LANSING		5	1	3800
P51	SUNOCO #0363-9119	ITHACA	B	2	1	30000
P52	XTRA MART #1617-DRYDEN	DRYDEN	B	4	1	25000
P53	SENECA ST. SUPER SERVICE	ITHACA	B	0	2	0
P54	DUTHIE PAINTING CO., INC.	LANSING	L	0	2	0
P55	PAUL MANCINI & SONS, INC.	ITHACA	L	3	1	1800
P56	WATCHTOWER FARMS-KINGDOM FARM	LANSING	I	3	1	3000
P57	TOMPKINS COUNTY HIGHWAY DEPT.	ITHACA	FL	4	1	24000
P58	PYRAMID MALL ITHACA	ITHACA	C	1	2	275
P59	CAYUGA HEIGHTS FIRE DEPT.	ITHACA	F	0	2	0
P60	FEDORKA FARMS	LANSING	I	2	2	800
P61	CRISVALYN FARMS	BERKSHIRE	I	2	1	1550
P62	JOHNNYS WHOLESale, INC.	ITHACA	L	1	2	1000
P63	TANANA OIL CORP. #416	ITHACA	BC	3	1	36000
P64	G & L TRUCKING, INC.	LOCKE	F	1	1	20000
P65	BILL'S MOBIL SERVICE	ITHACA	BC	3	1	12000
P66	EXPRESS MART #326	ITHACA	B	4	1	22550
P68	JUGHEAD'S PIZZA & SUB'S	TRUMANSBURG		0	2	0
P69	PAY-LO GAS CO. INC.	TRUMANSBURG	B	3	1	24000
P70	THOMPSON LAB	FREEVILLE	HI	2	1	1500
P71	KOHLBERG AUTO WORKS	LANSING	BC	5	1	22000
P72	STAR ENERGY & PETROLEUM, INC.	ITHACA	AB	10	1	89250
P73	SOUTHSIDE FUEL CO.	ITHACA		0	2	0
P74	SWARTHOUT COACHES, INC.	ITHACA	F	1	1	12000
P75	DRYDEN CENTRAL SCHOOL DISTRICT	DRYDEN	H	2	1	11000
P76	R.J. WHYTE & SONS	FREEVILLE	B	3	1	15000
P77	MOBIL S/S 08-EGT	ITHACA	B	4	1	33000
P78	MOBIL S/S 08-EHJ	ITHACA	B	4	1	30550
P79	COVERED BRIDGE MARKET	NEWFIELD		1	2	500
P80	JOHNNY ANTONELLI TIRE CO., INC.	ITHACA	L	0	2	0
P81	SHIPRAH FARM	GROTON	I	1	1	10000
P82	C & Y CONVENIENCE STORE	LANSING	B	4	1	20000
P83	TOWN OF ENFIELD HIGHWAY GARAGE	ITHACA	L	4	1	5150
P84	BURIN'S SUNOCO	ITHACA	B	0	2	0
P85	MONRO MUFFLER BRAKE, INC.	ITHACA		0	2	0
P86	HESS STATION #32464	ITHACA	B	4	1	42000
P87	NYNEX	ITHACA	E	1	1	2000
P88	NYNEX	ITHACA	E	2	1	4300
P89	NEW YORK TELEPHONE	ITHACA	E	1	2	1000
P90	NICE-N-EASY	ITHACA	B	2	1	20000
P91	JOHNSON BOAT YARD	ITHACA	BC	4	1	3600
P92	TOMPKINS SENECA TIOGA BCES	TOMPKINS		0	2	0
P93	NEW YORK STATE POLICE	ITHACA	L	1	1	3000
P94	ITHACA SHOPPING PLAZA	ITHACA	B	0	2	0
P95	BENJAMIN'S ONE STOP, INC.	ITHACA	B	5	1	18000
P96	HILLARD'S WRECKER & SERVICE	LANSING		0	2	0
P97	OMNI ELECTRO MOTIVE INC.	NEWFIELD	D	1	1	10000
P98	NICE-N-EASY	JACKSONVILLE	B	4	1	16000
P99	JOHN A. SWITZER	TRUMANSBURG	IJ	2	1	1500
P100	AMERICAN POLYSTEEL FORMS	NEWFIELD	D	1	1	10000
P101	PAOLANGELI CONTRACTOR	ITHACA	F	3	1	2550
P102	MAGUIRE FORD LINCOLN-MERCURY	ITHACA		0	2	0
P103	VARNA INN & AUTO SERVICE	ITHACA	B	4	1	17300
P104	MIDNIGHT SUN MARKET, INC.	SLATERVILLE	B	0	2	0
P105	NYS ARMORY-DRYDEN	ITHACA	L	2	1	6000
P106	LANSING RESIDENTIAL CENTER	LANSING	L	6	1	21600
P107	MACCORMICK CENTER	BROOKTONDALE	L	6	1	17000
P108	HOWARD JOHNSON	ITHACA		0	2	0
P109	VALLEY VIEW GROCERY	NEWFIELD	B	2	1	17000
P110	APALACHIN OIL CO. INC.	DRYDEN		0	3	0
P112	CLOCK AND DECLoux	ITHACA	A	0	2	0

P113	BENSVue FARMS	LANSING	I	3	1	12000
P114	PETR-ALL CORP.	DRYDEN	B	0	2	0
P115	TOWN OF DANBY	ITHACA	L	3	1	3275
P116	CUDLIN'S USED CARS	ITHACA	L	0	2	0
P117	ITHACARE CENTER, INC.	ITHACA	L	0	2	0
P118	NEDROW BROS. FARM	LANSING	I	0	2	0
P119	LAKESIDE NURSING HOME, INC.	ITHACA	L	1	1	2000
P120	KING SUB SHOPS	ITHACA	L	0	2	0
P121	AGWAY ENERGY PRODUCTS	FREEVILLE	B	1	1	10000
P122	XTRA MART #1601 - LANSING	LANSING	B	4	1	32000
P123	FORMER LARRY GOW CHEVROLET PROPERTY	TRUMANSBURG	CL	0	2	0
P124	UNITED STATES POSTAL SERVICE	ITHACA	L	1	1	8000
P125	GENEX, INC.	ITHACA	IJ	3	1	4500
P126	XTRA MART #1623 - FREEVILLE	FREEVILLE	B	4	1	32000
P127	SUPERIOR DISPOSAL	NEWFIELD	F	2	1	10500
P128	PLEASANT VIEW M.H.P.	DRYDEN	L	0	2	0
P129	MOR-GAS	NEWFIELD	BC	0	2	0
P130	FALL CREEK ELEMENTARY SCHOOL	ITHACA	H	0	2	0
P131	WEST HILL SCHOOL	ITHACA	H	0	2	0
P132	BELLE SHERMAN ELEMENTARY SCHOOL	ITHACA	H	0	2	0
P133	DANBY	ITHACA	H	0	2	0
P134	MARVIN J. FREEDMAN	ITHACA	D	0	2	0
P135	VALLEY KORNER'S STORE	ITHACA	B	3	1	15500
P136	ST. PAUL'S UNITED METHODIST CHURCH	ITHACA	L	0	2	0
P137	TOMPKINS-SENECA-TIOGA BOCES	ITHACA	H	3	1	1550
P138	WILLIAM T. PRITCHARD, INC.	ITHACA	C	1	4	500
P140	KENDAL AT ITHACA	ITHACA	G	2	1	5000
P141	PETE'S GROCERY	ITHACA	BC	2	1	20000
P142	TOMPKINS COUNTY PUBLIC SAFETY BUILDING	ITHACA	L	2	1	5000
P143	BIG AL'S GET-N-GO	FREEVILLE	B	4	1	27000
P144	VILLAGE OF CAYUGA HEIGHTS DPW	ITHACA	L	2	1	2000
P145	CORTLAND TIRE SERVICE, INC.	ITHACA	C	2	4	550
P146	MONRO MUFFLER/BRAKE #16	ITHACA	C	0	2	0
P148	SUNNY'S CONVENIENCE STORE	ITHACA	BC	2	1	15000
P149	RESEARCH PARK BLDG 1	ITHACA	H	0	2	0
P150	EAST HILL FLYING CLUB	ITHACA	HL	0	2	0
P151	H.H. LOVE FIELD BLDG	ITHACA	H	0	2	0
P152	CALDWELL FIELD	ITHACA	HI	3	1	2285
P153	GLENN STRAUF	GROTON	F	0	2	0
P154	UNITED PARCEL SERVICE	LANSING	F	3	1	10550
P155	POULTRY BLDG. EAST & WEST	ITHACA	HI	0	2	0
P156	REYNOLDS GAME FARM	ITHACA	L	2	2	850
P157	AGWAY ENERGY PRODUCTS	MCLEAN	F	0	2	0
P158	MT. PLEASANT AGRONOMY COMPLEX	ITHACA	HI	2	1	1500
P159	MAINTENANCE BUILDING	DRYDEN	H	0	2	0
P160	RMS GRAVEL	DRYDEN	L	6	1	17050
P161	SAUNDERS CONCRETE CO.	DRYDEN	F	2	1	25000
P162	BENCHMARK NEW YORK - SOUTH LANSING	LANSING	L	6	1	19325
P163	CAYUGA CRUSHED STONE INC.	LANSING	D	6	1	21550
P164	NYS DOT	ITHACA	L	4	1	3050
P165	HANCOCK PLAZA PROPERTY	ITHACA	L	0	2	0
P170	MONTEZUMA NATIONAL WILDLIFE REFUGE	SENECA FALLS	L	3	1	3000
P171	NEW YORK CHIROPRACTIC COLLEGE	SENECA FALLS	H	0	2	0
P175	MOBIL S/S 08-P5E	INTERLAKEN	L	0	2	0
P181	COVERT FARMS	ROMULUS	L	0	2	0
P185	RICHARD COMPTON FARM	OVID	I	3	1	3100
P187	SUNRISE FOOD STORE #16	OVID	B	4	1	26000
P188	INTERLAKEN AUTO SERVICE	INTERLAKEN	B	3	1	12275
P201	U.S.BULK TRANSPORT,INC - MAXAM TRUCKING	INTERLAKEN	F	2	1	12275
P207	CULVER FARMS INC	TRUMANSBURG	I	1	2	800
P219	CORNELL T&R CENTER	DRYDEN	HI	6	1	4945
P236	TUNISON LABORATORY	CORTLAND	L	0	2	0
P258	CORTLAND WOOD PRODUCTS	CORTLAND	D	2	1	12000
P291	JAMES COUNTRY CORNERS	GENOA	B	2	1	20000
P293	TOWN OF VENICE	VENICE CENTER	L	4	1	13350
P294	JOHN BERRY	GENOA	I	1	1	10000
P297	FESSENDEN FARMS	KING FERRY	I	3	1	2000
P298	DAVID B. WHITE (FARM)	SCPIO CENTER	IJ	1	2	300
P299	OSTERHOUDT FARMS	GENOA	I	9	1	12830
P300	VENICE VIEW DAIRY INC.	VENICE CENTER	I	4	1	12500
P301	CLEARVIEW FARM	GENOA	I	0	2	0
P302	WALLCOURT	AURORA	L	0	2	0
P303	CAYUGA COUNTY HIGHWAY DEPT.(VENICE)	VENICE CENTER	F	1	1	10000
P304	VENICE ENTERPRISE, INC.	VENICE CENTER	F	1	1	10000
P305	GREENHILL FARMS	SCPIO CENTER	I	1	1	10000
P306	LEDYARD HIGHWAY DEPARTMENT	AURORA	L	1	1	4000
P307	TOWN OF SCPIO	SCPIO CENTER	L	2	1	8500
P310	WELLS COLLEGE	AURORA	H	8	1	69300
P311	AURORA RESEARCH FARM	AURORA	HI	2	1	2000
P312	HUNT'S SERVICE STATION	POPLAR RIDGE	BC	2	1	2000
P313	SCIVEVILLE GARAGE	SCPIO CENTER	L	2	1	1550
P314	WILCOX GENERAL STORE	KING FERRY	B	2	1	5000
P315	AGWAY ENERGY PRODUCTS	KING FERRY	B	0	2	0
P316	TOWN OF GENOA HIGHWAY DEPT.	GENOA	L	1	2	1000
P317	AGWAY ENERGY PRODUCTS	AURORA	B	0	2	0
P319	AURORA INN	AURORA	L	1	1	2000
P320	JOHN DUNKLE	KING FERRY	I	1	1	10000
P321	GARY M WHITTEN	SCPIO CENTER	L	0	2	0
P322	AGWAY ENERGY PRODUCTS	CAYUGA	L	0	2	0

Site Status

- 1-Active
- 2-Inactive

Site Type

- A- Storage Terminal/Petroleum Distributor
- B-Retail Gasoline Sales
- C-Other Retail
- D-Manufacturing
- E-Utility
- F-Trucking/Transportation
- G-Apartment Building
- H-School
- I-Farm
- J-Private Residence
- K-Airline
- L-Other

Source: Adapted from NYSDEC

3.6 Underground and Above Ground Storage Tanks

Chemical and petroleum products held in storage tanks pose a significant threat to water quality. USEPA estimates that approximately one-third of all existing tanks nationwide are leaking (USEPA 1987). The average expected life span of steel tanks in acidic soils is approximately 15 years. At this point, corrosion may result in pinhole leaks that may discharge hundreds of gallons of fuel over several months. These leakage rates are small enough to go unnoticed to the tank owner, but are large enough to cause significant contamination problems.

Leaking underground storage tanks (USTs) (see Section 3.8 Hazardous Spills) can be significant sources of oil, fuel, and volatile organic compound (VOC) contamination. These contaminants may move into surface-water resources with groundwater flow. However, many of these compounds are volatile and will evaporate from the surface water system. The problems generated by leaky USTs are numerous. They include contamination of public and private drinking water wells, explosions and fires, and plume migration toward surface water bodies.

In the Cayuga Lake Watershed there are over 340 registered storage tanks sites containing petroleum and chemicals. As Map 3.6.1 indicates these are fairly well dispersed throughout the watershed, with a higher density in the population centers, especially at the southern end of the lake. Of the 340 registered sites, there are approximately 320 registered bulk petroleum sites with 650 tanks (see Table 3.6.3). One hundred eighty sites are active.

Approximately 80 of the registered bulk petroleum storage tank sites are gasoline stations (see Section 3.10), 20 are manufacturing sites (see Section 3.9), 25 are school sites (see Section 3.11), and 25 are farm sites. Of the 164 farms surveyed in the Six Mile (Tompkins County S&WCD) and the Fall Creek (Mussell) subwatersheds, 40% (65) had either above ground or below ground petroleum storage tanks (see Table 3.12.1). There are over 15 chemical bulk storage sites in the watershed with 33 active tanks (see Table 3.6.2). Four of these are manufacturing sites, three are utilities, four are municipalities, and two are schools.