

2.13 Wetlands

Wetlands form in a great variety of environments. Wetlands include such familiar areas as marshes, swamps and bogs. When the upper part of the soil is saturated with water at growing season temperatures, soil organisms consume the oxygen in the soil and cause conditions unsuitable for most plants. Such conditions also cause the development of soil characteristics (such as color and texture) of so-called "hydric soils." The plants that can grow in such conditions, such as marsh grasses, are called "hydrophytes." Together, hydric soils and hydrophytes give clues that a wetlands area is present.

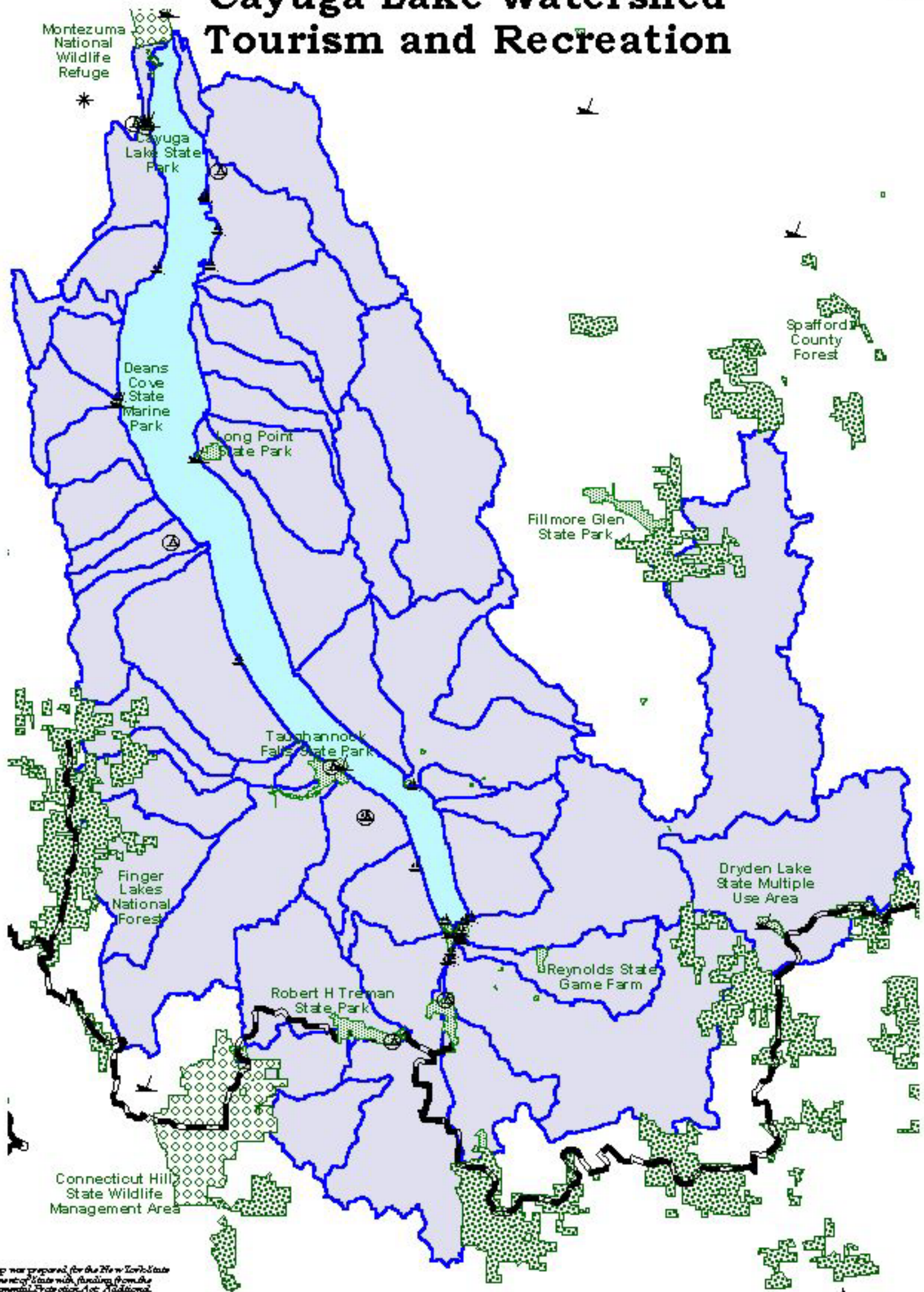
The presence of water by ponding, flooding, or soil saturation is not always a good indicator of wetlands. Generally, the amount of water present in wetlands fluctuates as a result of rainfall patterns, snow melt, dry seasons and longer droughts. However, the presence of water greatly influences the soils and plant life found in wetlands. The water table is usually at or near the surface. The wetland area may be covered by shallow water all or part of the year or may not exhibit surface water.

Wetlands provide many benefits, including food and habitat for fish and wildlife; flood protection; shoreline erosion control; natural products for human use; water quality improvement; and opportunities for recreation, education, and research. In New York State 60% of all wetlands have been lost from 1780 through 1980 (USEPA, 1999).

A variety of federal, state, and local regulations affect construction and other activities in wetlands and are in areas immediately adjacent to wetlands. In addition, the types, sizes, and locations of wetlands included in the regulations vary from law to law. The principle federal laws that regulate activities in wetlands are Sections 404 and 401 of the Clean Water Act, and Section 10 of the River and Harbors Act. Other federal laws include the National Environmental Policy Act, the Coastal Zone Management Act, and the Swampbuster provision of the Food, Agriculture, Conservation and Trade Act. The principal New York State regulations affecting development activities in and near wetlands in the Cayuga Lake Watershed include the Freshwater Wetlands Act and the Tidal Wetlands Act. Many local governments in New York also have provisions in ordinances and other regulations that affect projects proposed in or adjacent to wetlands (see Programmatic Environment Chapter).

There are approximately 6,575 acres of New York State Department of Conservation regulated freshwater wetlands in the watershed. This accounts for just over 1% of the land area in the watershed. As Map 2.12.11 indicates, these wetlands are fairly evenly dispersed throughout the watershed. The New York State Freshwater Wetlands Act

Cayuga Lake Watershed Tourism and Recreation



This map was prepared for the New York State Department of State with funding from the Environmental Protection Act. Additional funding was provided through the Empire State Development Corporation.

Sources: New York State Dept of Transportation, 1996;
New York State Office of Parks, Recreation and Historical Preservation, 1999;
Campground Owners of New York, 1998;
Cayuga-Tupper Lake Regional Planning Council, 1998

Base Map: New York State Department of Transportation, February 1996

- ⊙ Campground
- ⚓ Boat Launch
- ⚓ Marina
- * Urban Cultural Park
- ↗ Finger Lakes Trail
- ▨ Forest
- ▨ Park/Recreation Area
- ⊙ Wildlife Sanctuary

1:342510

0 3 6 Miles

protects freshwater wetlands and requires a 100 foot buffer around these wetlands. In the Cayuga Lake Watershed these are wetlands of 12.4 acres or greater in size, or smaller wetlands of unusual local importance. These wetlands have one or more of the following characteristics: a) lands and submerged lands commonly called marshes, swamps, sloughs, bogs, and flats supporting aquatic or semi-aquatic vegetation which depend upon seasonal or permanent flooding or sufficiently water logged soils to give them a competitive advantage; b) land and submerged lands containing remnants of any vegetation that is not aquatic or semi-aquatic that has died because of wet conditions over a sufficiently long period, provided that such wet conditions do not exceed a maximum seasonal water depth of six feet and provided further that such condition can be expected to persist indefinitely, barring human intervention; or c) land and water substantially enclosed by aquatic or semi-aquatic vegetation.

2.14 Demographic and Socio-Economic Profile

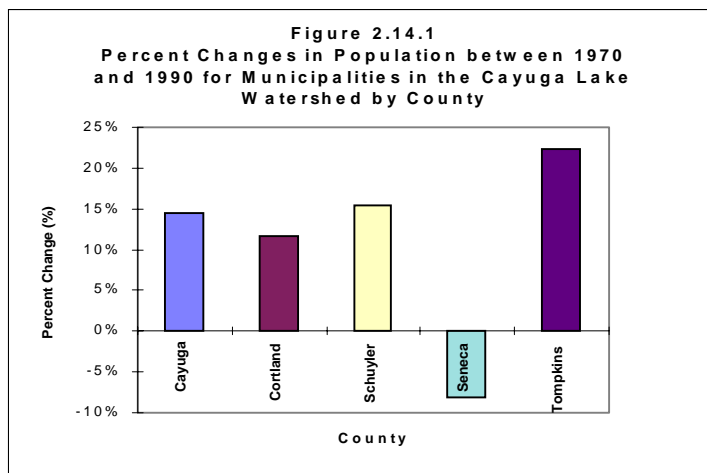
The data presented in this analysis for these counties and municipalities are taken (except where otherwise noted) from the 1990 Census of Population and Housing. Because the Census Bureau's geographical study areas are not sensitive to watershed boundaries, the analysis provided herein is meant to serve as a general overview of the social and economic characteristics of the municipalities in the watershed; not the portions of these municipalities that fall within the Cayuga Lake Watershed. In some cases, only small portions of the municipalities analyzed lie within the watershed. Therefore, the validity of any projections made for only the portions of the municipalities that lie in the watershed will be limited.

2.14.1 Population

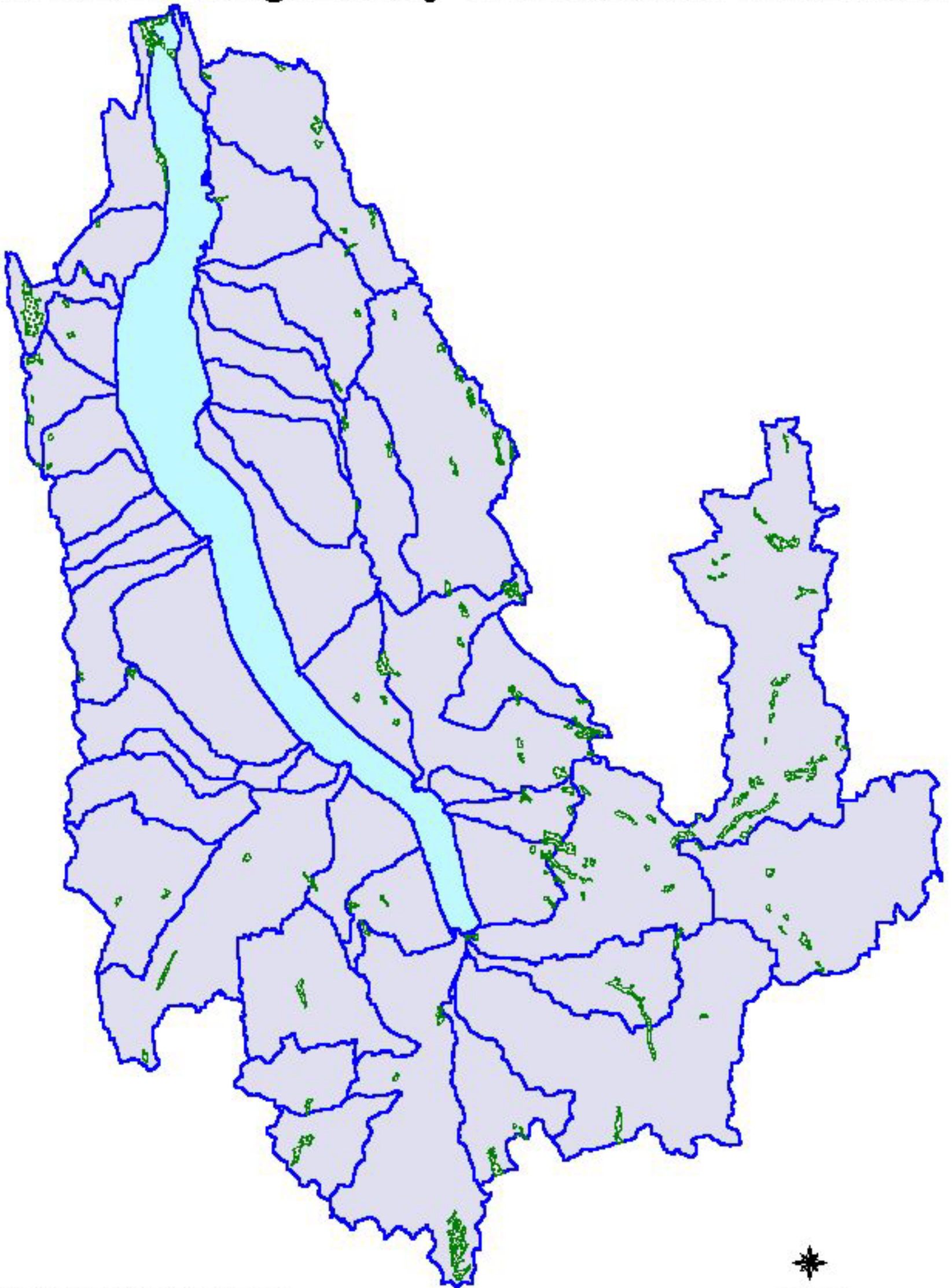
There are portions of six counties and 44 municipalities within the Cayuga Lake Watershed. The populations of the municipalities as of 1996 are shown in Map 2.14.1. From 1970 to 1990, the population of these municipalities has grown 16.5%. Between 1970 and 1980 the population increased 8.9% and the next decade saw a slightly smaller (7.0%) increase. Of the six counties, only the Seneca County municipalities within the watershed lost population (-8.1%) between 1970 and 1990. The Town of Spencer grew the fastest between 1970 and 1990 at a rate of 50%. In Tompkins County, the City of Ithaca, all of the towns, and all but one of the six villages are within the watershed. These municipalities grew at a rate of 22% between 1970 and 1990. Each of the remaining counties' municipalities within the watershed grew between 11% and 16%. Figure 2.14.1 displays the percent change in population of municipalities in the watershed by county. The populations and changes by percent from 1970 to 1980 and 1980 to 1990 for each municipality in the watershed are presented in Table 2.14.1.

In 1997, the New York State Association of Regional Councils (NYSARC) published *New York State Population Projections through 2030*. To accomplish this, the nine regional planning councils and development boards of New York State each produced population projections for their respective regions. It is important to note that differing methodologies were used by the regional

planning councils and development boards to arrive at the population projections used in this report. Projections were provided at the sub-county level for Cortland, Schuyler, Seneca, Tioga, and Tompkins counties, although these projections were never approved for use in Tompkins County. Cayuga County's growth rate was determined at the county level. For the purposes of this study, the Cayuga County growth rate was applied to each of its municipality's base year population (1990) to forecast changes in these populations between 1990 and 2010. The projected growth rates of municipal populations within the watershed by county are presented in Figure 2.14.2. According to these estimates, the combined population of the municipalities within the watershed will continue to experience growth but at a slower rate than that of the previous twenty years. The fastest growth is expected to



Cayuga Lake Watershed NYSDEC Regulatory Freshwater Wetlands



This map was prepared for the New York State Department of State with funding from the Environmental Protection Act. Additional funding was provided through the Empire State Development Corporation.

*Source: New York State Department of Environmental Conservation, December 2004 and April 2005
Cayuga/Tugay Lake Regional Planning Council, 2005.*

Base Map: New York State Department of Transportation, February 2005.

 NYSDEC Regulatory Freshwater Wetlands

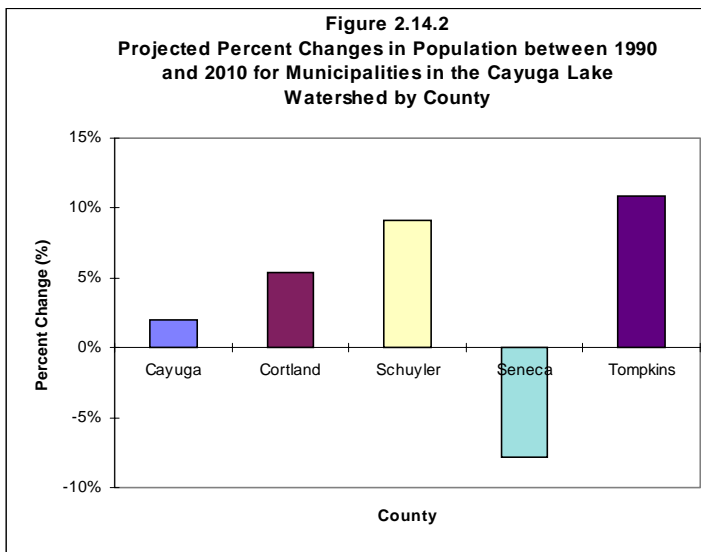

1:342510

0 4 8 Miles


Prepared by Cayuga/Tugay Lake Regional Planning Council, 2005.

occur in the Tompkins County (10.9%), Tioga County (9.9%), and Schuyler County (9.1%) municipalities while the Cortland County (5.4%) and Cayuga County (2%) municipalities will also increase, but at a less substantial rate. Again, only the Seneca County municipalities are expected to decrease in population over the same period (-7.8%). As a whole, the population of the municipalities within the watershed is expected to increase by approximately 10,000 persons or 7% from 1990 to the end off the first decade of the upcoming century. The projected increases in population for all municipalities in the watershed are shown in Table 2.14.2.

The combined population density for all of the municipalities in the watershed in 1990 was nearly 104 persons per square mile of land area. The greatest population density can be found at the southern end of the watershed in Tompkins County. The only city in the watershed (Ithaca) is located in Tompkins County and contributes greatly to an increased population density for both that particular county and the watershed as a whole. The City of Ithaca's population density is 5371.1 persons per square mile of land area. In contrast, the population density for the municipalities in Cayuga, Cortland, Schuyler, and Seneca counties combined is only 62.1 persons per square mile of land area. When the City of Ithaca is excluded, the population density for the watershed as a whole is only 82.9 persons per square mile of land area. The population densities for municipalities in the watershed are provided below in Table 2.14.3.

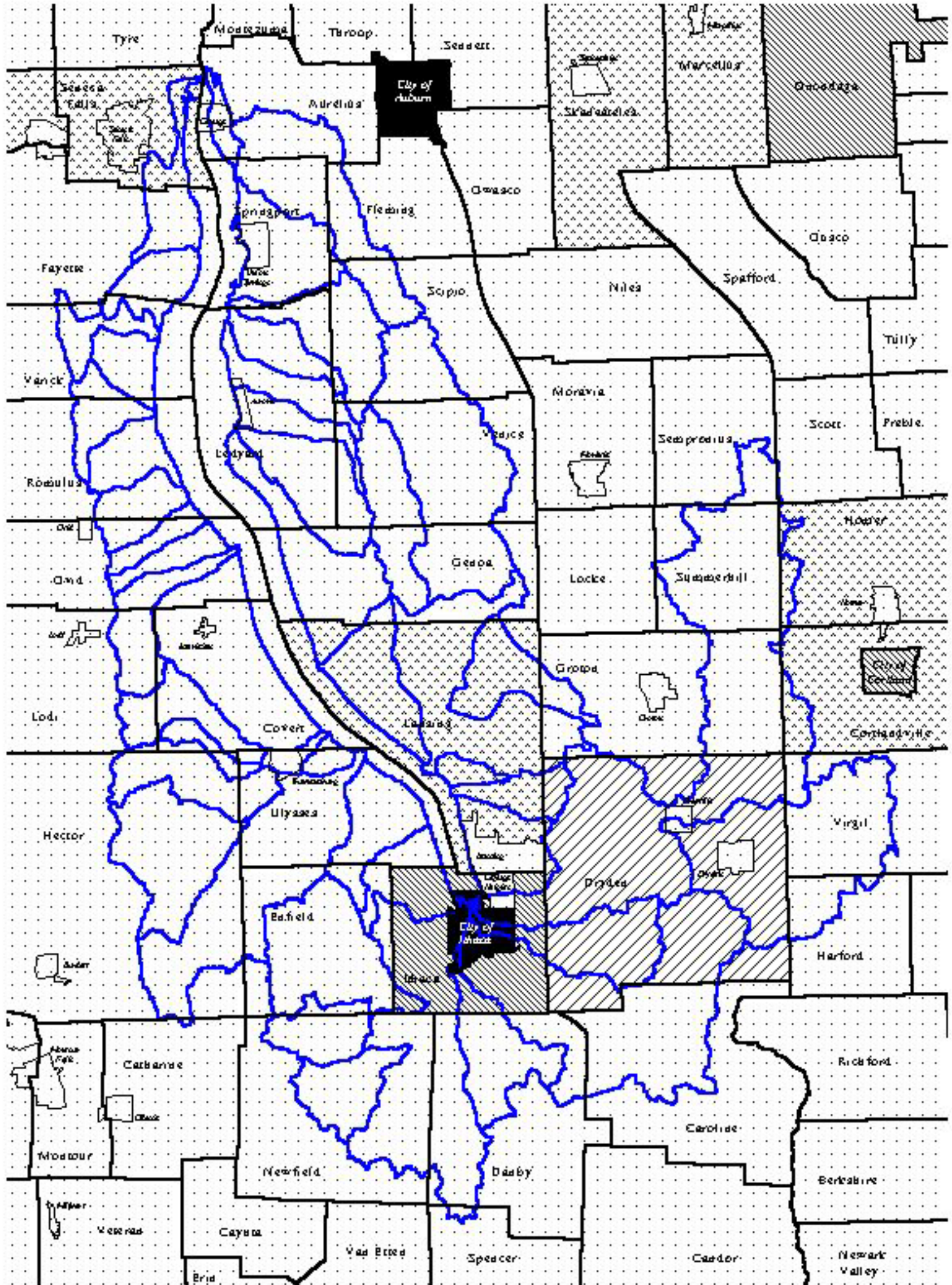


2.14.2 Housing

In 1990, the municipalities in the Cayuga Lake Watershed contained 63,515 housing units. Of these housing units, over two-thirds (69.1%) were in rural areas as defined by the Census Bureau. Farms constituted 2.6% (1,485 units) of all housing units in municipalities within the watershed. Only two towns in Schuyler County are in the watershed. However, located within the towns of Hector and Catharine were 57.8% of all the farms in Schuyler County. Of the 415 farms in Seneca County, 84% (347 farms) were in towns with at least some portion of the watershed within their boundaries. Cayuga County and Cortland County towns in the watershed comprised 51% and 38% of the total number of farms in their respective counties. Urban housing units constituted 31% of the total number of housing units in municipalities in the watershed. Urban housing units (as opposed to rural housing units) are in US Census Bureau defined Urbanized Areas. An Urbanized Area comprises one or more Central Places (usually a large city or cities) and the surrounding, densely settled land area called the Urban Fringe. The minimum population of an Urbanized Area is 50,000 persons. The City of Ithaca contained nearly 57% of all urban housing units in the watershed. No urban housing units were present in Cayuga, Schuyler, Seneca, or Tioga counties and the remaining urban housing units, all outside urbanized areas, were found in Cortland County. A breakdown of housing units by urban and rural classifications is provided in Table 2.14.4.

Housing units in towns in the watershed and the City of Ithaca had a 90.2% occupancy rate in 1990. Of all occupied housing units nearly 65% were owner occupied. Only seven of the municipalities analyzed had a lower owner occupancy rate than that of the study area as a whole. Over half (55%) of all renter occupied housing units in the study area were located in the City and Town of Ithaca, and Village of Lansing. The City of Ithaca alone contained approximately 37% of all the renter occupied units in municipalities within the watershed. In fact, over 70% of all housing units in the City of Ithaca were renter occupied. The presence of postsecondary institutions (namely Cornell University and Ithaca College) most likely accounts for the large number of renter occupied housing units in these municipalities. Compared to the average homeowner in the US, college students tend to be younger, more mobile, and lack the financial resources necessary to purchase a home. The total number of occupied housing units and the numbers of those that are owner or renter occupied are presented in Table 2.14.5.

Cayuga Lake Watershed Population by Municipality



This map was prepared for the New York State Department of State with funding from the Environmental Protection Act. Additional funding was provided through the Empire State Development Corporation.

Source: US Department of Commerce, Bureau of the Census, 1996 Estimates of Resident Population, 1997. Genesee/Finger Lakes Regional Planning Council, 1998.

Base Map: New York State Department of Transportation, February 1996.

1996 Population



1:401030



In 1990, the vacancy rate for the towns and city in the watershed was 10.2%. Over half (51.2%) of all vacant housing units were for seasonal, recreational, or occasional use. Over 60% of seasonal, recreational, or occasional use housing units were located in the municipalities bordering the lake. It can be assumed that a number of the units falling within the classification of being for seasonal, recreational, or occasional use are homes and cottages used to enjoy the lake's recreational amenities. Of the remaining vacant housing units, 18.5% were for rent, 6.1% were for sale, and 24.3% were vacant for a reason other than those listed above. The Village of Lansing and the City and Town of Ithaca are home to the largest percentage of renters, and also contained 53.5% of all vacant housing units for rent in the study area. A breakdown of vacant housing units is provided below in Table 2.14.6.

According to the Census Bureau, over half (51.4%) of all housing units in municipalities within the watershed received their water from a public system or private company in 1990. Individual drilled wells provided water to 37.3% of the housing units in the study area over the same period. Individual dug wells and other sources provided water to the remaining housing units. Drilled wells were the primary source of water in the Cayuga, Cortland, Schuyler, and Tioga county municipalities in the watershed. Public systems and private companies were the primary sources of water for municipalities in Seneca and Tompkins counties. The sources of water for housing units in the study area are displayed in Table 2.14.7.

Within the study area, just over half (55%) of all housing units in municipalities in the watershed relied on septic tanks or cesspools for sewage disposal. Nearly all of the remaining housing units used public sewers, with approximately 1% of the remaining housing units disposing of sewage by some other means as defined by the Census Bureau. Septic tanks and cesspools were the primary means of sewage disposal in all of the counties in the watershed, with Tompkins County being the exception. Approximately 60% of the Tompkins County municipalities relied on public sewers for sewage disposal. The Towns of Danby and Ledyard were the only municipalities in the watershed to have no housing units using a public sewer. Only fourteen (or 32%) of the municipalities in the watershed had a majority of housing units using public sewers in 1990. Many of these were at the southern end of the lake including the City of Ithaca and the towns and villages surrounding it. Means of sewage disposal for municipalities in the watershed are detailed in Table 2.14.8.

2.14.3 Economic Profile

In 1990, the largest percentage of persons with incomes below the poverty level were found in the City of Ithaca. Nearly 40% of the population had incomes below the poverty level. This may be attributable to the large number of students who are enrolled in local colleges and universities and are not likely to be employed full time. There are areas of high and low poverty levels throughout the study area. A breakdown of the percent of population with incomes below the poverty level for the city and towns in the watershed is displayed in Table 2.14.9.

The highest per capita and median household income among all municipalities in the watershed could be found in the Village of Cayuga Heights. The median household income for the Village of Cayuga Heights was over 50% higher than the state average and the per capita income was almost 70% higher than the state average. As a whole, the Tompkins County municipalities exhibited the highest per capita and median household incomes in the watershed while the Schuyler County municipalities exhibited the lowest. Again, distribution of areas with high and low incomes scattered among municipalities within the various counties. Tables 2.14.10 and 2.14.11 present median household income and per capita income for the municipalities in the watershed.

Only two of the Seneca County municipalities in the watershed had more than 70% of their population in the labor force. Of the eight municipalities with less than 65% of the population in the labor force, five were in Seneca County. Two municipalities in Tompkins County did not have 65% or more of their populations in the labor force. They were the City and Town of Ithaca. As stated earlier, this may be attributable to the large number of college students, many of who may not be actively seeking employment. In 1990, only four municipalities in the watershed had unemployment rates higher than the state average. The lowest rates of unemployment were found at the southern end of the watershed in Tompkins County. The percentage of population in the labor force and unemployment rates for cities and towns in the watershed are displayed in Table 2.14.12.

To some degree, the level of education for an area represents the quality of the labor force and the potential for increased economic prosperity. As could be expected, the City of Ithaca and the municipalities surrounding it had the highest percentage of persons with a high school diploma or higher and the highest percentage of persons with a bachelor's degree or higher in the study area. Only five of the 44 municipalities in the watershed had a lower

percentage of persons with a high school diploma or higher than the state average. However, only 13 of the municipalities in the watershed had a higher percentage of persons with a bachelor's degree or higher than the average for New York State. The percentage of persons with a high school diploma or higher and a bachelor's degree or higher are provided in Table 2.14.13.

Most of the major private employers in the watershed are located in the southern end of the watershed, and more particularly in the City of Ithaca and Town of Ithaca. Two of the three largest employers (Cornell University and Ithaca College) are institutions of higher education. The Wegmans, Tops, and P & C grocery stores employ approximately 1,000 persons and several manufacturing and high technology firms are also present. A list of employers in municipalities in the watershed with more than 100 employees is provided in Table 2.14.14.

Between 1985 and 1996 the number of persons employed by manufacturing firms decreased in all six counties in the Cayuga Lake Watershed. Simultaneously, retail trade and service employment rose over the same period in all six counties. With the exceptions of Seneca and Tioga counties, the number of full-time and part-time employees in each of the counties increased between 1985 and 1996. In some industries, the counties in the watershed experienced growth in employment between 1985 and 1990 only to see cutbacks in the total number of employees in those same industries between 1990 and 1996. A breakdown of employment by industry is presented in Table 2.14.15.

Table 2.14.1 - Population Change: 1970 - 1990

	1970	1980	% Change	1990	% Change
Cayuga County					
Town of Aurelius	2,158	2,316	7.3%	2,357	1.8%
Village of Cayuga	693	604	-12.8%	556	-7.9%
Town of Fleming	2,242	2,394	6.8%	2,642	10.4%
Town of Genoa	1,744	1,921	10.1%	1,868	-2.8%
Town of Ledyard	814	943	15.8%	1,050	11.3%
Village of Aurora	1,072	926	-13.6%	687	-25.8%
Town of Locke	1,152	1,751	52.0%	1,917	9.5%
Town of Scipio	1,290	1,471	14.0%	1,517	3.1%
Town of Sempronius	649	733	12.9%	796	8.6%
Town of Springport	728	1,009	38.6%	1,056	4.7%
Village of Union Springs	1,183	1,201	1.5%	1,142	-4.9%
Town of Summerhill	670	850	26.9%	1,023	20.4%
Town of Venice	1,261	1,268	0.6%	1,315	3.7%
Cortland County					
Town of Cortlandville	7,090	6,070	-14.4%	6,960	14.7%
Town of Harford	748	855	14.3%	886	3.6%
Town of Homer	2,417	2,985	23.5%	3,053	2.3%
Town of Scott	805	1,193	48.2%	1,167	-2.2%
Town of Virgil	1,692	2,053	21.3%	2,172	5.8%
Schuyler County					
Town of Catharine	1,886	1,932	2.4%	1,991	3.1%
Town of Hector	3,671	3,793	3.3%	4,423	16.6%
Seneca County					
Town of Covert	1,364	1,503	10.2%	1,566	4.2%
Village of Interlaken	733	685	-6.5%	680	-0.7%
Town of Fayette	2,352	2,829	20.3%	2,856	1.0%
Town of Lodi	934	850	-9.0%	1,068	25.6%
Town of Ovid	2,359	1,888	-20.0%	1,671	-11.5%
Town of Romulus	4,253	2,440	-42.6%	2,507	2.7%
Town of Seneca Falls	2,106	2,420	-42.6%	2,014	-16.8%
Town of Varick	1,700	1,868	14.9%	2,161	15.7%
Tioga County					
Town of Spencer	1,378	1,770	28.4%	2,066	16.7%
Tompkins County					
City of Ithaca	26,226	28,732	9.6%	29,541	2.8%
Town of Caroline	2,536	2,754	8.6%	3,044	10.5%
Town of Danby	2,141	2,449	14.4%	2,858	16.7%
Town of Dryden	7,616	9,946	30.6%	10,906	9.7%
Village of Dryden	1,490	1,761	18.2%	1,908	8.3%
Village of Freeville	664	449	-32.4%	437	-2.7%
Town of Enfield	2,028	2,375	17.1%	3,054	28.6%
Town of Groton	2,769	2,900	4.7%	3,085	6.4%
Town of Ithaca	12,490	12,852	2.9%	14,340	11.6%
Village of Cayuga Heights	3,130	3,170	1.3%	3,457	9.1%
Town of Lansing*	5,972	5,278	-11.6%	6,015	14.0%
Village of Lansing	N/A	3,039	N/A	3,281	8.0%
Town of Newfield	3,390	4,401	29.8%	4,867	10.6%
Town of Ulysses	2,697	2,944	9.2%	3,295	11.9%
Village of Trumansburg	1,803	1,722	-4.5%	1,611	-6.4%

Source: US Department of Commerce, Bureau of Census. 1970, 1980, & 1990.

*The 1970 census count for the Town of Lansing includes the Village of Lansing which is now counted separately.

Table 2.14.2 - Projected Population Change: 1990 - 2010

	1990	2000	% Change	2010	% Change
Cayuga County					
Town of Aurelius	2,357	2387	1.3%	2405	0.7%
Village of Cayuga	556	563	1.3%	567	0.7%
Town of Fleming	2,642	2676	1.3%	2696	0.7%
Town of Genoa	1,868	1892	1.3%	1906	0.7%
Town of Ledyard	1,737	1759	1.3%	1772	0.7%
Village of Aurora	687	696	1.3%	701	0.7%
Town of Locke	1,917	1942	1.3%	1956	0.7%
Town of Scipio	1,517	1536	1.3%	1548	0.7%
Town of Sempronius	796	806	1.3%	812	0.7%
Town of Springport	2,198	2226	1.3%	2243	0.7%
Village of Union Springs	1,142	1157	1.3%	1165	0.7%
Town of Summerhill	1,023	1036	1.3%	1044	0.7%
Town of Venice	1,315	1332	1.3%	1342	0.7%
Cortland County					
Town of Cortlandville	6,960	7,155	2.8%	7,355	2.8%
Town of Harford	886	907	2.4%	929	2.4%
Town of Homer	3,053	3,126	2.4%	3,201	2.4%
Town of Scott	1,167	1,195	2.4%	1,224	2.4%
Town of Virgil	2,172	2,233	2.8%	2,295	2.8%
Schuyler County					
Town of Catharine	1,991	2,212	11.1%	2,246	1.5%
Town of Hector	4,423	4,661	5.4%	4,751	1.9%
Seneca County					
Town of Covert	1,566	1,615	3.1%	1,640	1.5%
Village of Interlaken	680	739	8.7%	734	-0.7%
Town of Fayette	2,856	2,869	0.5%	2,906	1.3%
Town of Lodi	1,068	1,100	3.0%	1,106	0.5%
Town of Ovid	1,671	1,451	-13.2%	1,462	0.8%
Town of Romulus	2,507	1,921	-23.4%	1,933	0.6%
Town of Seneca Falls	2,014	2,000	-0.7%	2,044	2.2%
Town of Varick	2,161	1,567	-27.5%	1,570	0.2%
Tioga County					
Town of Spencer	2,066	2,195	6.2%	2,271	3.5%
Tompkins County					
City of Ithaca	29,541	29,429	-0.4%	29,779	1.2%
Town of Caroline	3,044	3,437	12.9%	3,687	7.3%
Town of Danby	2,858	3,027	5.9%	3,277	8.3%
Town of Dryden	10,906	11,969	9.7%	12,769	6.7%
Village of Dryden	1,908	2,037	6.8%	2,057	1.0%
Village of Freeville	437	471	7.8%	491	4.2%
Town of Enfield	3,054	3,291	7.8%	3,641	10.6%
Town of Groton	3,085	3,178	3.0%	3,278	3.1%
Town of Ithaca	14,340	14,832	3.4%	15,632	5.4%
Village of Cayuga Heights	3,457	4,073	17.8%	4,093	0.5%
Town of Lansing	6,015	6,911	14.9%	7,711	11.6%
Village of Lansing	3,281	3,633	10.7%	3,883	6.9%
Town of Newfield	4,867	5,391	10.8%	5,641	4.6%
Town of Ulysses	3,295	3,575	8.5%	3,925	9.8%
Village of Trumansburg	1,611	1,791	11.2%	1,811	1.1%

Source: US Department of Commerce, Bureau of Census. 1990 and New York State Association of Regional Councils. 1997.

Table 2.14.3 - Population Density: 1990

Land Area Population Density
(Square Miles)

	Land Area (Square Miles)	Population	Density
Cayuga County			
Town of Aurelius	30.30	2,913	96.1
Village of Cayuga	0.60	556	926.7
Town of Fleming	21.80	2,642	121.2
Town of Genoa	39.70	1,868	47.1
Town of Ledyard	36.30	1,737	47.9
Village of Aurora	1.00	687	687.0
Town of Locke	24.40	1,917	78.6
Town of Scipio	36.70	1,517	41.3
Town of Sempronius	29.40	796	27.1
Town of Springport	21.50	2,198	102.2
Village of Union Springs	1.80	1,142	634.4
Town of Summerhill	25.90	1,023	39.5
Town of Venice	41.10	1,315	32.0
Cortland County			
Town of Cortlandville	48.6	6,960	143.2
Town of Harford	24.2	886	36.6
Town of Homer	50.4	3,053	60.6
Town of Scott	22.3	1,167	52.3
Town of Virgil	47.3	2,172	45.9
Schuyler County			
Town of Catharine	32.8	1,991	60.7
Town of Hector	102.5	4,423	43.2
Seneca County			
Town of Covert	31.2	1,566	50.2
Village of Interlaken	0.3	680	2266.7
Town of Fayette	65.9	2,856	43.3
Town of Lodi	33.7	1,068	31.7
Town of Ovid	30.6	1,671	54.6
Town of Romulus	37.8	2,507	66.3
Town of Seneca Falls	19.8	2,014	101.7
Town of Varick	32.3	2,161	66.9
Tioga County			
Town of Spencer	49	2,066	42.5
Tompkins County			
City of Ithaca	5.5	29,541	5371.1
Town of Caroline	55	3,044	55.3
Town of Danby	53.6	2,858	53.3
Town of Dryden	91.1	10,906	119.7
Village of Dryden	1.7	1,908	1122.4
Village of Freeville	1.1	437	397.3
Town of Enfield	36.9	3,054	82.8
Town of Groton	48	3,085	64.3
Town of Ithaca	27.3	14,340	525.3
Village of Cayuga Heights	1.8	3,457	1920.6
Town of Lansing	56.1	6,015	107.2
Town of Newfield	58.9	4,867	82.6
Town of Ulysses	33	3,295	99.8
Village of Trumansburg	1.2	1,611	1342.5

Source: US Department of Commerce, Bureau of Census. 1990.

Table 2.14.4 - Housing Units: 1990

	Total Number of Housing Units	Inside Urbanized Area	Urban		Rural		
			Outside Urbanized Area	Farm	Non-Farm		
Cayuga County							
Town of Aurelius	898	-	-	57		841	
Village of Cayuga	246	-	-	-		246	
Town of Fleming	1,048	-	-	39		1,009	
Town of Genoa	897	-	-	77		820	
Town of Ledyard	597	-	-	50		547	
Village of Aurora	213	-	-	3		210	
Town of Locke	702	-	-	28		674	
Town of Scipio	631	-	-	70		561	
Town of Sempronius	343	-	-	23		320	
Town of Springport	522	-	-	21		501	
Village of Union Springs	501	-	-	-		501	
Town of Summerhill	402	-	-	26		376	
Town of Venice	502	-	-	69		433	
Cortland County							
Town of Cortlandville	3,127	-	10	38		3,079	
Town of Harford	321	-	-	2		319	
Town of Homer	1,092	-	-	58		1,034	
Town of Scott	434	-	-	10		424	
Town of Virgil	893	-	-	37		856	
Schuyler County							
Town of Catharine	594	-	-	21		573	
Town of Hector	2,071	-	-	112		1,959	
Seneca County							
Town of Covert	846	-	-	74		772	
Village of Interlaken	277	-	-	-		277	
Town of Fayette	1,309	-	-	69		1,240	
Town of Lodi	585	-	-	58		527	
Town of Ovid	760	-	-	48		712	
Town of Romulus	955	-	-	34		921	
Town of Seneca Falls	910	-	-	11		899	
Town of Varick	797	-	-	48		749	
Tioga County							
Town of Spencer	832	-	-	15		817	
Tompkins County							
City of Ithaca	10,075	10,075	-	-		-	
Town of Caroline	1,223	-	-	47		1,176	
Town of Danby	1,094	-	-	47		1,047	
Town of Dryden	4,336	483	-	81		3,772	
Village of Dryden	792	-	-	3		789	
Village of Freeville	190	-	-	-		190	
Town of Enfield	1,182	-	-	32		1,150	
Town of Groton	1,118	-	-	66		1,052	
Town of Ithaca	4,767	4,067	-	9		691	
Village of Cayuga Heights	1,470	1,470	-	-		-	
Town of Lansing	2,496	13	-	51		2,432	
Village of Lansing	1,639	1,639	-	-		-	
Town of Newfield	1,675	-	-	23		1,652	
Town of Ulysses	1,383	-	-	28		1,355	
Village of Trumansburg	674	-	-	-		674	

Source: US Department of Commerce, Bureau of Census. 1990.

Table 2.14.5 - Occupied Housing Units: 1990

	Occupied Housing Unit	Owner Occupied	Renter Occupied
Cayuga County			
Town of Aurelius	820	713	107
Village of Cayuga	196	148	48
Town of Fleming	940	850	90
Town of Genoa	653	517	136
Town of Ledyard	360	300	60
Village of Aurora	186	118	68
Town of Locke	645	552	93
Town of Scipio	510	443	67
Town of Sempronius	272	234	38
Town of Springport	349	294	55
Village of Union Springs	435	306	129
Town of Summerhill	317	278	39
Town of Venice	433	345	88
Cortland County			
Town of Cortlandville	3,017	2,181	836
Town of Harford	292	251	41
Town of Homer	1,029	826	203
Town of Scott	381	362	19
Town of Virgil	736	592	144
Schuyler County			
Town of Catharine	503	419	84
Town of Hector	1,598	1,349	249
Seneca County			
Town of Covert	580	511	69
Village of Interlaken	258	185	73
Town of Fayette	979	850	129
Town of Lodi	376	322	54
Town of Ovid	616	483	133
Town of Romulus	756	472	284
Town of Seneca Falls	758	614	144
Town of Varick	622	515	107
Tioga County			
Town of Spencer	736	648	88
Tompkins County			
City of Ithaca	9,617	2,778	6,839
Town of Caroline	1,149	840	309
Town of Danby	1,050	809	241
Town of Dryden	4,091	2,938	1,153
Village of Dryden	753	458	295
Village of Freeville	158	111	47
Town of Enfield	1,106	836	270
Town of Groton	1,071	928	143
Town of Ithaca	4,476	2,340	2,136
Village of Cayuga Heights	1,406	795	611
Town of Lansing	2,304	1,678	626
Village of Lansing	1,508	428	1,080
Town of Newfield	1,901	1,485	416
Town of Ulysses	1,238	1,016	222
Village of Trumansburg	634	430	204

Source: US Department of Commerce, Bureau of Census. 1990.

Table 2.14.6 - Vacant Housing Units: 1990

	Vacant Housing Unit	Vacant - For Rent	Vacant - For Sale	For Seasonal, recreational, occasional Use	All Other Vacant
Cayuga County					
Town of Aurelius	78	-	5	39	34
Village of Cayuga	50	6	4	27	13
Town of Fleming	108	24	4	45	35
Town of Genoa	244	18	3	183	40
Town of Ledyard	237	-	8	212	17
Village of Aurora	27	-	3	13	11
Town of Locke	57	22	3	10	22
Town of Scipio	121	2	8	49	62
Town of Sempronius	71	4	5	39	23
Town of Springport	173	-	11	123	39
Village of Union Springs	66	5	6	26	29
Town of Summerhill	85	4	5	69	7
Town of Venice	69	2	5	32	30
Cortland County					
Town of Cortlandville	87	13	20	3	51
Town of Harford	29	6	3	2	18
Town of Homer	63	8	8	22	25
Town of Scott	53	5	6	33	9
Town of Virgil	157	9	7	114	27
Schuyler County					
Town of Catharine	91	2	4	75	10
Town of Hector	441	6	18	360	57
Seneca County					
Town of Covert	266	5	19	219	23
Village of Interlaken	19	5	2	2	10
Town of Fayette	330	14	11	288	17
Town of Lodi	209	3	-	182	24
Town of Ovid	144	5	8	102	29
Town of Romulus	199	30	6	120	43
Town of Seneca Falls	152	16	-	117	19
Town of Varick	175	16	2	138	19
Tioga County					
Town of Spencer	96	-	6	41	49
Tompkins County					
City of Ithaca	458	264	18	38	138
Town of Caroline	74	37	-	13	24
Town of Danby	44	-	9	20	15
Town of Dryden	245	152	19	20	54
Village of Dryden	39	16	8	-	15
Village of Freeville	32	5	-	6	21
Town of Enfield	76	32	6	11	27
Town of Groton	47	-	-	-	47
Town of Ithaca	291	152	29	32	78
Village of Cayuga Heights	64	18	16	4	26
Town of Lansing	192	31	22	51	88
Village of Lansing	131	82	10	17	22
Town of Newfield	87	39	6	12	30
Town of Ulysses	147	15	20	88	22
Village of Trumansburg	40	12	2	2	24

Source: US Department of Commerce, Bureau of Census. 1990.

Table 2.14.7 - Source of Water by Housing Units: 1990

	Public System or Private Company	Individual Well (Drilled)	Individual Well (Dug)	Other Sources
Cayuga County				
Town of Aurelius	478	212	108	100
Village of Cayuga	240	2	2	2
Town of Fleming	718	234	65	31
Town of Genoa	311	391	106	89
Town of Ledyard	10	379	177	39
Village of Aurora	196	-	5	4
Town of Locke	279	344	20	59
Town of Scipio	7	357	193	74
Town of Sempronius	14	205	54	70
Town of Springport	91	298	73	70
Village of Union Springs	475	15	4	7
Town of Summerhill	6	339	35	22
Town of Venice	5	356	92	49
Cortland County				
Town of Cortlandville	1,746	1,261	64	56
Town of Harford	34	249	27	11
Town of Homer	42	950	66	26
Town of Scott	56	298	41	39
Town of Virgil	118	693	45	37
Schuyler County				
Town of Catharine	57	460	42	35
Town of Hector	440	1,037	328	266
Seneca County				
Town of Covert	147	457	87	155
Village of Interlaken	263	8	3	3
Town of Fayette	209	772	220	108
Town of Lodi	7	390	106	82
Town of Ovid	112	446	95	107
Town of Romulus	499	260	91	105
Town of Seneca Falls	616	232	40	22
Town of Varick	98	363	132	204
Tioga County				
Town of Spencer	4	744	48	36
Tompkins County				
City of Ithaca	10,038	11	8	18
Town of Caroline	81	955	94	93
Town of Danby	110	891	54	39
Town of Dryden	1,118	2,857	301	60
Village of Dryden	762	28	2	-
Village of Freeville	17	140	15	18
Town of Enfield	44	959	103	76
Town of Groton	967	866	116	80
Town of Ithaca	4,135	542	45	45
Village of Cayuga Heights	1,470	-	-	-
Town of Lansing	746	1,436	209	102
Village of Lansing	1,636	-	6	-
Town of Newfield	230	83	-	-
Town of Ulysses	213	899	106	165
Village of Trumansburg	670	4	-	-

Source: US Department of Commerce, Bureau of Census. 1990.

Table 2.14.8 - Sewage Disposal by Housing Units: 1990

	Public Sewer	Septic Tank/ Cesspool	Other
Cayuga County			
Town of Aurelius	138	740	20
Village of Cayuga	210	34	2
Town of Fleming	570	476	2
Town of Genoa	13	866	18
Town of Ledyard	-	582	15
Village of Aurora	198	15	-
Town of Locke	145	546	11
Town of Scipio	4	581	46
Town of Sempronius	14	328	1
Town of Springport	54	463	5
Village of Union Springs	446	55	-
Town of Summerhill	6	396	-
Town of Venice	4	493	5
Cortland County			
Town of Cortlandville	1,196	1,910	21
Town of Harford	5	312	4
Town of Homer	29	1,040	23
Town of Scott	6	415	13
Town of Virgil	119	760	14
Schuyler County			
Town of Catharine	10	575	9
Town of Hector	10	1,808	74
Seneca County			
Town of Covert	76	768	2
Village of Interlaken	267	10	-
Town of Fayette	9	1,287	13
Town of Lodi	7	562	16
Town of Ovid	79	654	27
Town of Romulus	487	453	15
Town of Seneca Falls	565	340	5
Town of Varick	93	683	21
Tioga County			
Town of Spencer	16	792	24
Tompkins County			
City of Ithaca	10,022	53	-
Town of Caroline	88	1,085	50
Town of Danby	-	1,081	13
Town of Dryden	1,003	3,283	50
Village of Dryden	746	46	-
Village of Freeville	165	25	-
Town of Enfield	33	1,124	25
Town of Groton	43	1,068	7
Town of Ithaca	3,929	805	33
Village of Cayuga Heights	1,462	8	-
Town of Lansing	281	2,167	48
Village of Lansing	1,514	125	-
Town of Newfield	395	1,560	33
Town of Ulysses	155	1,226	2
Village of Trumansburg	641	33	-

Source: US Department of Commerce, Bureau of Census. 1990.

Table 2.14.9 - Percent of Population with Incomes Below the Poverty Level: 1989

1990 - % of Population Below Poverty Level

New York State	13.0%
Cayuga County	
Town of Aurelius	7.2%
Village of Cayuga	3.5%
Town of Fleming	4.2%
Town of Genoa	8.0%
Town of Ledyard	14.7%
Village of Aurora	1.3%
Town of Locke	9.7%
Town of Scipio	8.2%
Town of Sempronius	7.0%
Town of Springport	8.1%
Village of Union Springs	6.5%
Town of Summerhill	8.8%
Town of Venice	9.2%
Cortland County	
Town of Cortlandville	7.6%
Town of Harford	15.6%
Town of Homer	6.6%
Town of Scott	5.6%
Town of Virgil	7.2%
Schuyler County	
Town of Catharine	14.2%
Town of Hector	12.5%
Seneca County	
Town of Covert	4.5%
Village of Interlaken	9.1%
Town of Fayette	4.4%
Town of Lodi	9.0%
Town of Ovid	7.8%
Town of Romulus	11.4%
Town of Seneca Falls	13.3%
Town of Varick	10.3%
Tioga County	
Town of Spencer	7.3%
Tompkins County	
City of Ithaca	39.4%
Town of Caroline	8.9%
Town of Danby	6.5%
Town of Dryden	10.3%
Village of Dryden	10.9%
Village of Freeville	8.0%
Town of Enfield	14.3%
Town of Groton	9.1%
Town of Ithaca	12.2%
Village of Cayuga Heights	17.6%
Town of Lansing	6.3%
Village of Lansing	14.7%
Town of Newfield	12.4%
Town of Ulysses	7.9%
Village of Trumansburg	6.2%

Source: US Department of Commerce, Bureau of Census. 1990.

Table 2.14.10 - Median Household Income (MHI): 1989

	MHI	% of NYS MHI
New York State	\$ 32,695	100%
Cayuga County		
Town of Aurelius	\$ 33,182	101.5%
Village of Cayuga	\$ 34,688	106.1%
Town of Fleming	\$ 37,443	114.5%
Town of Genoa	\$ 30,967	94.7%
Town of Ledyard	\$ 29,457	90.1%
Village of Aurora	\$ 33,750	103.2%
Town of Locke	\$ 29,886	91.4%
Town of Scipio	\$ 31,970	97.8%
Town of Sempronius	\$ 29,500	90.2%
Town of Springport	\$ 34,130	104.4%
Village of Union Springs	\$ 30,451	93.1%
Town of Summerhill	\$ 27,460	84.0%
Town of Venice	\$ 29,318	89.7%
Cortland County		
Town of Cortlandville	\$ 30,176	92.3%
Town of Harford	\$ 28,056	85.8%
Town of Homer	\$ 34,442	105.3%
Town of Scott	\$ 33,393	102.1%
Town of Virgil	\$ 32,841	100.4%
Schuyler County		
Town of Catharine	\$ 24,519	75.0%
Town of Hector	\$ 26,970	82.5%
Seneca County		
Town of Covert	\$ 31,542	96.5%
Village of Interlaken	\$ 27,031	82.7%
Town of Fayette	\$ 33,574	102.7%
Town of Lodi	\$ 27,344	83.6%
Town of Ovid	\$ 26,159	80.0%
Town of Romulus	\$ 28,110	86.0%
Town of Seneca Falls	\$ 36,056	110.3%
Town of Varick	\$ 31,154	95.3%
Tioga County		
Town of Spencer	\$ 33,448	102.3%
Tompkins County		
City of Ithaca	\$ 17,738	54.3%
Town of Caroline	\$ 29,282	89.6%
Town of Danby	\$ 34,500	105.5%
Town of Dryden	\$ 33,176	101.5%
Village of Dryden	\$ 31,121	95.2%
Village of Freeville	\$ 32,639	99.8%
Town of Enfield	\$ 29,659	90.7%
Town of Groton	\$ 30,799	94.2%
Town of Ithaca	\$ 32,303	98.8%
Village of Cayuga Heights	\$ 51,034	156.1%
Town of Lansing	\$ 33,969	103.9%
Village of Lansing	\$ 29,655	90.7%
Town of Newfield	\$ 28,281	86.5%
Town of Ulysses	\$ 33,796	103.4%
Village of Trumansburg	\$ 31,667	96.9%

Source: US Department of Commerce, Bureau of Census. 1990.

Table 2.14.11 - Per Capita Income (PCI): 1989

	PCI	% of NYS PCI
New York State	\$ 16,501	100%
Cayuga County		
Town of Aurelius	\$ 12,902	78.2%
Village of Cayuga	\$ 11,557	70.0%
Town of Fleming	\$ 15,825	95.9%
Town of Genoa	\$ 11,534	69.9%
Town of Ledyard	\$ 11,863	71.9%
Village of Aurora	\$ 12,201	73.9%
Town of Locke	\$ 10,803	65.5%
Town of Scipio	\$ 12,910	78.2%
Town of Sempronius	\$ 11,233	68.1%
Town of Springport	\$ 12,811	77.6%
Village of Union Springs	\$ 13,496	81.8%
Town of Summerhill	\$ 9,517	57.7%
Town of Venice	\$ 10,617	64.3%
Cortland County		
Town of Cortlandville	\$ 13,259	80.4%
Town of Harford	\$ 9,743	59.0%
Town of Homer	\$ 12,516	75.8%
Town of Scott	\$ 11,685	70.8%
Town of Virgil	\$ 12,457	75.5%
Schuyler County		
Town of Catharine	\$ 10,443	63.3%
Town of Hector	\$ 11,307	68.5%
Seneca County		
Town of Covert	\$ 13,244	80.3%
Village of Interlaken	\$ 12,640	76.6%
Town of Fayette	\$ 12,790	77.5%
Town of Lodi	\$ 12,167	73.7%
Town of Ovid	\$ 11,476	69.5%
Town of Romulus	\$ 10,333	62.6%
Town of Seneca Falls	\$ 13,759	83.4%
Town of Varick	\$ 12,883	78.1%
Tioga County		
Town of Spencer	\$ 11,458	69.4%
Tompkins County		
City of Ithaca	\$ 9,213	55.8%
Town of Caroline	\$ 13,032	79.0%
Town of Danby	\$ 15,600	94.5%
Town of Dryden	\$ 14,826	89.8%
Village of Dryden	\$ 13,389	81.1%
Village of Freeville	\$ 12,134	73.5%
Town of Enfield	\$ 12,064	73.1%
Town of Groton	\$ 12,500	75.8%
Town of Ithaca	\$ 19,743	119.6%
Village of Cayuga Heights	\$ 27,818	168.6%
Town of Lansing	\$ 15,641	94.8%
Village of Lansing	\$ 18,801	113.9%
Town of Newfield	\$ 12,309	74.6%
Town of Ulysses	\$ 15,023	91.0%
Village of Trumansburg	\$ 14,572	88.3%

Source: US Department of Commerce, Bureau of Census. 1990.

Table 2.14.12 - Labor Force and Unemployment: 1990

	% of Population in Labor Force	% of Labor Force Unemployed
New York State	63.6%	6.9%
Cayuga County		
Town of Aurelius	60.9%	6.2%
Village of Cayuga	70.1%	5.1%
Town of Fleming	66.3%	4.9%
Town of Genoa	70.5%	6.5%
Town of Ledyard	67.9%	4.9%
Village of Aurora	82.4%	1.0%
Town of Locke	74.1%	5.3%
Town of Scipio	71.8%	4.1%
Town of Sempronius	72.7%	5.9%
Town of Springport	69.9%	8.7%
Village of Union Springs	65.3%	4.5%
Town of Summerhill	74.2%	4.2%
Town of Venice	71.0%	6.5%
Cortland County		
Town of Cortlandville	70.7%	5.4%
Town of Harford	73.9%	4.0%
Town of Homer	75.0%	6.2%
Town of Scott	76.2%	5.7%
Town of Virgil	75.1%	7.7%
Schuyler County		
Town of Catharine	67.5%	8.5%
Town of Hector	67.6%	5.4%
Seneca County		
Town of Covert	67.8%	3.6%
Village of Interlaken	58.6%	6.2%
Town of Fayette	64.9%	5.9%
Town of Lodi	70.1%	7.2%
Town of Ovid	56.5%	2.4%
Town of Romulus	57.3%	6.6%
Town of Seneca Falls	64.5%	3.8%
Town of Varick	72.6%	6.8%
Tioga County		
Town of Spencer	65.9%	4.1%
Tompkins County		
City of Ithaca	51.0%	4.9%
Town of Caroline	73.3%	5.9%
Town of Danby	79.4%	5.1%
Town of Dryden	74.9%	5.2%
Village of Dryden	72.7%	3.8%
Village of Freeville	70.9%	2.2%
Town of Enfield	75.9%	5.9%
Town of Groton	74.1%	5.5%
Town of Ithaca	70.3%	3.9%
Village of Cayuga Heights	57.8%	2.2%
Town of Lansing	75.2%	3.9%
Village of Lansing	68.4%	1.4%
Town of Newfield	74.7%	2.3%
Town of Ulysses	68.3%	3.3%
Village of Trumansburg	70.0%	3.3%

Source: US Department of Commerce, Bureau of Census. 1990.

Table 2.14.13 - Educational Attainment of Persons 25 and Older: 1990

	% With High School Diploma or Higher	% With Bachelor's Degree or Higher
New York State	74.8%	23.1%
Cayuga County		
Town of Aurelius	72.8%	14.1%
Village of Cayuga	82.1%	14.7%
Town of Fleming	83.1%	17.8%
Town of Genoa	79.2%	16.7%
Town of Ledyard	77.7%	22.0%
Village of Aurora	93.8%	54.0%
Town of Locke	75.3%	10.4%
Town of Scipio	76.3%	14.0%
Town of Sempronius	74.7%	11.6%
Town of Springport	81.4%	18.9%
Village of Union Springs	81.1%	21.8%
Town of Summerhill	74.2%	8.2%
Town of Venice	81.2%	16.3%
Cortland County		
Town of Cortlandville	77.0%	21.1%
Town of Harford	76.3%	10.7%
Town of Homer	83.0%	15.3%
Town of Scott	75.1%	13.1%
Town of Virgil	78.1%	17.9%
Schuyler County		
Town of Catharine	78.5%	9.3%
Town of Hector	78.7%	19.0%
Seneca County		
Town of Covert	83.7%	19.3%
Village of Interlaken	82.4%	18.7%
Town of Fayette	81.8%	14.0%
Town of Lodi	80.3%	20.0%
Town of Ovid	69.1%	13.5%
Town of Romulus	74.4%	13.4%
Town of Seneca Falls	84.0%	16.6%
Town of Varick	79.5%	16.2%
Tioga County		
Town of Spencer	75.5%	13.8%
Tompkins County		
City of Ithaca	86.7%	50.2%
Town of Caroline	81.5%	31.7%
Town of Danby	88.5%	30.3%
Town of Dryden	87.1%	37.9%
Village of Dryden	84.3%	32.3%
Village of Freeville	86.0%	34.7%
Town of Enfield	75.9%	18.1%
Town of Groton	77.7%	14.9%
Town of Ithaca	89.9%	46.9%
Village of Cayuga Heights	98.5%	82.8%
Town of Lansing	88.3%	32.1%
Village of Lansing	97.5%	63.5%
Town of Newfield	80.8%	17.8%
Town of Ulysses	89.5%	33.2%
Village of Trumansburg	89.3%	38.0%

Source: US Department of Commerce, Bureau of Census. 1990.

Table 2.14.14 - Major Private Employers in the Watershed

Employer	Town	Number Employed	
Cornell University	Ithaca	8600	Higher education
Goulds Pumps, Inc.	Seneca Falls	1413	Pumps and pumping equipment
Ithaca College	Ithaca	1300	Higher education
Borg Warner Automotive, Inc.	Lansing	1115	Automotive transmission systems
Cayuga Medical Center	Ithaca	700	Health care
Wegmans	Ithaca	640	Grocery stores
Emerson Power Transmission	Ithaca	550	Automotive drive chain components
NYS Electric and Gas	Dryden	575	Public Utilities
Axhiom IPD	Ithaca	334	Printer manufacturing
Wilcox Press, Inc.	Ithaca	260	Offset and web printing
MacKenzie-Childs	Aurora	250	Ceramic household goods
Cargill, Inc.	Lansing	243	Deicing salt
Seneca Knitting Mills Corporation	Seneca Falls	240	Hosiery
Tompkins County Trust Company	Ithaca	224	Banking
Tops Friendly Markets	Ithaca	220	Grocery stores
CBORD Group	Lansing	207	Software developemtn/technology
Challenge Industries, Inc.	Ithaca	205	Rehabilitation and training of disabled persons
Therm Inc.	Ithaca	200	Manufacturing (turbine blades)
P & C Food Market	Ithaca	170	Grocery store/retail
Wells College	Aurora	160	Higher education
Ithaca Journal	Ithaca	155	Printing/publishing
Thomas & Associates	Ithaca	145	Architecture/engineering
Boyce Thompson Institute	Ithaca	138	Research
Hi-Speed Checkweigher, Inc.	Dryden	120	Weighing and handling equipment
Genex Cooperative	Ithaca	100	Dairy cattle genetics
Ithaca Peripherals	Ithaca	100	Manufacturing

Source: Central New York Regional Planning & Development Board, Genesee/Finger Lakes Regional Planning Council, Southern Tier Central Regional Planning & Development Board, Southern Tier East Regional Planning & Development Board and Tompkins County Area Development. 1998.

Table 2.14.15 - Employees by Industry 1985, 1990, & 1996 for Respective Counties

Cayuga County			
	1985	1990	1996
Total Employment	29,775	32,566	33,749
Farm Employment	1,868	1,722	1,613
Non-Farm Employment	27,907	30,844	32,136
Private Employment	23,000	25,083	26,681
Agric, forestry, fishing, other	256	303	422
Mining (L)	(L)	19	17
Construction	1,222	1,909	1,691
Manufacturing	5,145	4,316	4,648
Transport. & public utilities	1,343	1,402	1,544
Wholesale trade	1,025	1,085	1,179
Retail Trade	5,282	6,071	5,530
Finance, insurance, & real estate	1,385	1,381	1,770
Services	7,333	8,597	9,880
Government	4,907	5,761	5,455
Federal, civilian	169	186	185
Military	275	265	183
State and local	4,463	5,310	5,087

Schuyler County			
	1985	1990	1996
Total Employment	6,135	6,511	6,705
Farm Employment	663	517	439
Non-Farm Employment	5,472	5,994	6,266
Private Employment	4,475	4,879	5,196
Agric, forestry, fishing, other	109	75	95
Mining (L)	(L)	(L)	(L)
Construction	280	403	403
Manufacturing	1,073	998	881
Transport. & public utilities	123	155	195
Wholesale trade	127	143	137
Retail Trade	960	1,152	1,265
Finance, insurance, & real estate	207	263	289
Services	1,593	1,686	1,928
Government	997	1,115	1,070
Federal, civilian	40	49	58
Military	62	60	42
State and local	895	1,006	970

Cortland County			
	1985	1990	1996
Total Employment	21,724	25,480	24,937
Farm Employment	1,285	1,041	918
Non-Farm Employment	20,439	24,439	24,019
Private Employment	16,871	20,516	20,469
Agric, forestry, fishing, other	212	201	237
Mining (L)	(L)	(L)	(L)
Construction	1,003	1,214	1,096
Manufacturing	4,483	5,914	4,517
Transport. & public utilities	509	436	562
Wholesale trade	540	504	575
Retail Trade	3,711	4,605	5,030
Finance, insurance, & real estate	874	1,073	1,356
Services	5,531	6,564	7,087
Government	3,568	3,923	3,550
Federal, civilian	96	107	101
Military	165	158	108
State and local	3,307	3,658	3,341

Seneca County			
	1985	1990	1996
Total Employment	14,874	14,620	13,716
Farm Employment	883	707	620
Non-Farm Employment	13,991	13,913	13,096
Private Employment	9,468	9,626	10,689
Agric, forestry, fishing, other	87	101	149
Mining (L)	(L)	(L)	(L)
Construction	553	803	687
Manufacturing	3,405	2,589	2,306
Transport. & public utilities	302	411	411
Wholesale trade	385	334	574
Retail Trade	1,898	2,110	2,510
Finance, insurance, & real estate	508	528	677
Services	2,322	2,743	3,368
Government	4,523	4,287	2,407
Federal, civilian	1,180	1,110	320
Military	759	722	92
State and local	2,584	2,455	1,995

Tompkins County			
	1985	1990	1996
Total Employment	52,612	60,913	60,865
Farm Employment	1,141	915	779
Non-Farm Employment	51,471	59,998	60,086
Private Employment	46,644	54,174	53,915
Agric, forestry, fishing, other	1,027	1,087	(D)
Mining	295	286	(D)
Construction	1,719	2,145	1,753
Manufacturing	4,467	4,461	4,317
Transport. & public utilities	1,412	1,590	1,594
Wholesale trade	779	949	876
Retail Trade	7,370	8,546	8,461
Finance, insurance, & real estate	2,403	2,847	2,934
Services	27,172	32,263	32,605
Government	4,827	5,824	6,171
Federal, civilian	288	334	336
Military	350	339	242
State and local	4,189	5,151	5,593

Tioga County			
	1985	1990	1996
Total Employment	19,306	19,027	18,349
Farm Employment	1,019	900	832
Non-Farm Employment	18,287	18,127	17,517
Private Employment	15,986	15,492	14,826
Agric, forestry, fishing, other	135	140	(D)
Mining	48	69	(D)
Construction	761	1,034	1,015
Manufacturing	8,002	5,982	4,730
Transport. & public utilities	352	285	376
Wholesale trade	463	649	667
Retail Trade	2,124	2,785	2,744
Finance, insurance, & real estate	609	554	844
Services	3,492	3,994	4,078
Government	2,301	2,635	2,691
Federal, civilian	80	79	108
Military	186	176	124
State and local	2,035	2,380	2,459

(L) Less than 10 jobs. Estimates are included in totals.

(D) Not shown to avoid disclosure of confidential information. Estimates are included in totals.

Source: US Department of Commerce, Bureau of Economic Analysis. 1996.

[Back to Table of Contents](#)